

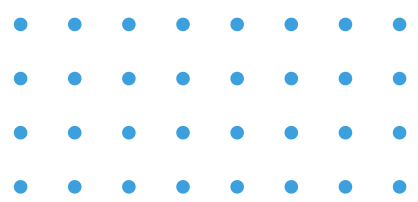
COMPREHENSION QUESTIONS

Demonstrating Understanding



Why comprehension?

Comprehension helps children truly understand what they read, not just recognise words. It builds thinking skills, improves vocabulary, and encourages discussion. When you talk about a story together, children learn to explain ideas, ask questions, and make connections, all of which support their confidence and success across every subject in school.



Comprehension Categories

In school reading tests, your child will be asked questions across five main areas: **retrieval**, **inference**, **vocabulary**, **prediction**, and **summarising or sequencing**. These questions help teachers understand not just what your child can read, but how well they understand and think about a text.



Retrieval

Finding information directly from the text, such as facts, details, or events that are clearly stated, such as, what is the character's name?

Inference

Reading between the lines to work out what a character is thinking, feeling, or why something happens. Questions such as, why did they do that?

Vocabulary

Understanding the meaning of words and phrases in the text, especially unfamiliar or tricky language. With questions such as, why did the author choose that word?

Prediction

Using clues from the text to guess what might happen next or how a story might end. With questions such as, what do you think the character will do now?

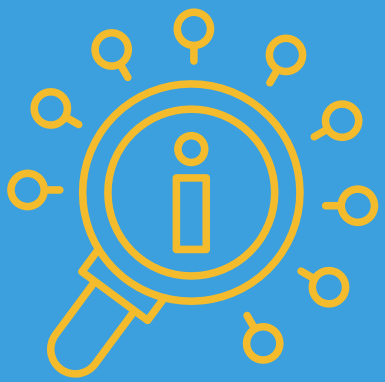


Summary or Sequencing

This is often the skill children find the most difficult. Picking out the main points and retelling them clearly, without including every small detail.

SUGGESTED COMPREHENSION QUESTIONS

RETRIEVAL



- Where did the character go?
- Who helped the main character?
- What happened at the end of the chapter/page/sentence?
- What did the character find?

INFERENCE



- How is the character feeling?
- Why did the character make that choice?
- What time of day/year is it in the story?
- How do you know the character is worried?

VOCABULARY



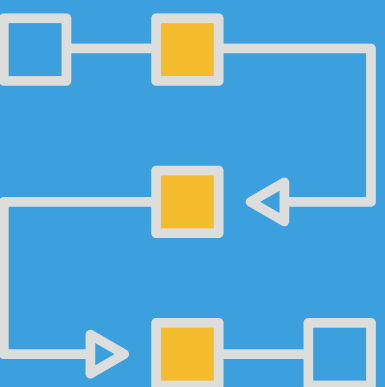
- What does this word mean?
- Which word shows how the character feels?
- Find a word that means the same as “happy”.
- What does this phrase tell you?

PREDICTION



- What do you think will happen next?
- How might the story end?
- What might the character do now?
- What clues help you make that prediction?

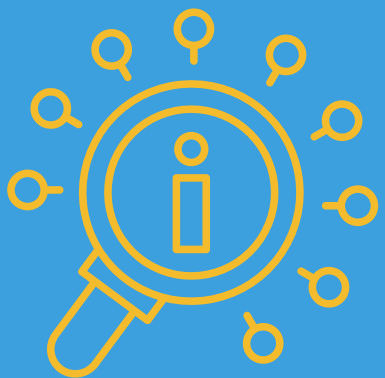
SUMMARY OR SEQUENCING



- What happened in this part of the story?
- Can you retell the main events?
- What are the most important points?
- What is this chapter mainly about?

SUGGESTED COMPREHENSION QUESTIONS FOR KS1

RETRIEVAL



- What was the main character's name?
- What colour was the character's clothing?
- Where did the story take place?
- What did the character want to do?

INFERENCE



- How is the character feeling?
- Why are they feeling that way?
- What is the character thinking?
- How do you know they are happy or sad?

VOCABULARY



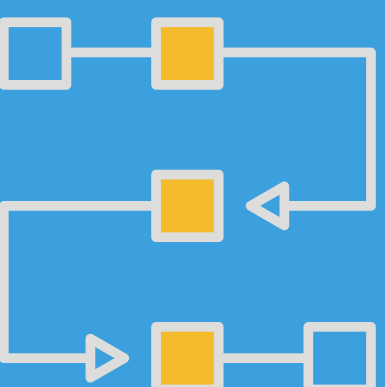
- What does this word mean?
- Point to the describing word in this sentence.
- Which word tells us how they feel?
- What is another word for "big"?

PREDICTION



- What do you think will happen next?
- What might the character do now?
- Where do you think they will go?
- What could happen at the end?

SUMMARY OR SEQUENCING



- What happened in the story?
- Can you tell me the story in your own words?
- What happened first, next, and last?
- What was the story about?

SUGGESTED COMPREHENSION QUESTIONS FOR KS2

RETRIEVAL



- According to the text, where did the character go after leaving the house?
- What two things did the character pack before the journey?
- Find and copy one word that shows how the setting is described.
- How long did the journey take?

INFERENCE



- What impression do you get of the main character? Use evidence from the text.
- Why does the character hesitate at this point?
- How is the character feeling? Give a reason using the text.
- What does this suggest about the relationship between the two characters?

VOCABULARY



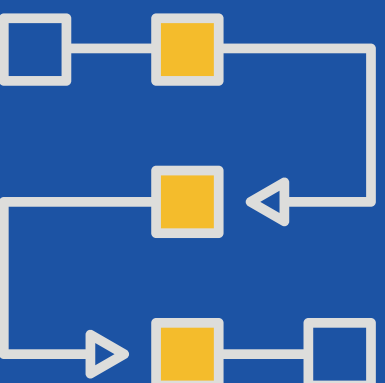
- What does the word [] mean in this sentence?
- Find a word or phrase that suggests the setting is dangerous.
- Which word is closest in meaning to “furious”?
- How does the phrase “a shadow crept over him” affect the reader?

PREDICTION



- What do you think will happen next? Use evidence from the text.
- Do you think the character will succeed? Explain why.
- How might the story end? Give a reason.
- What clues suggest what might happen next?

SUMMARY OR SEQUENCING



- Summarise what happens in this paragraph in one sentence.
- What is the main idea of this section?
- Put these events in the correct order.
- Which statement best sums up the character’s journey so far?